

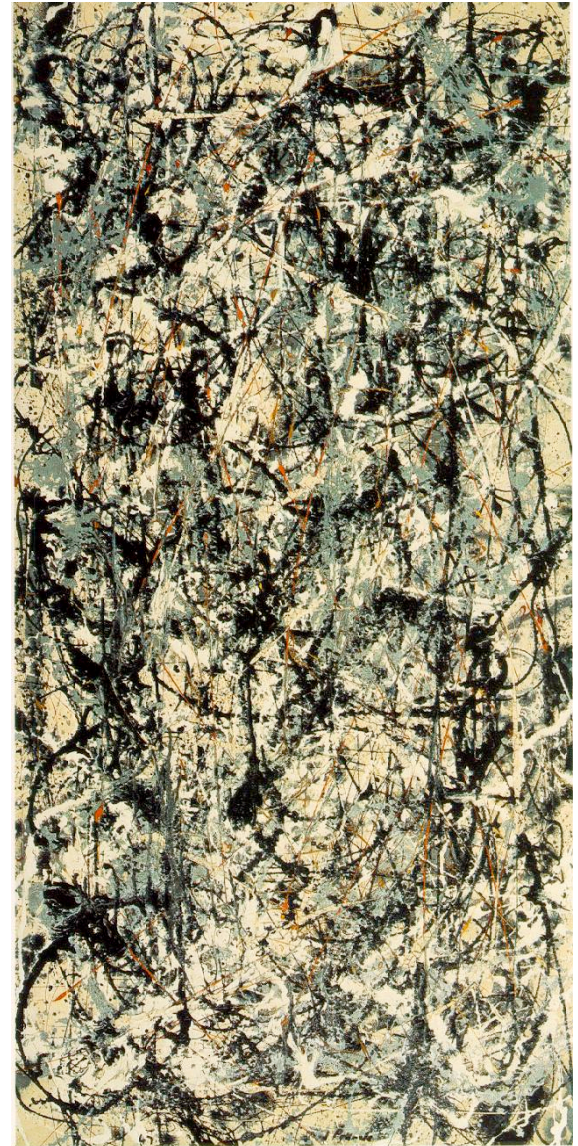
Pollock/Calame Artwork



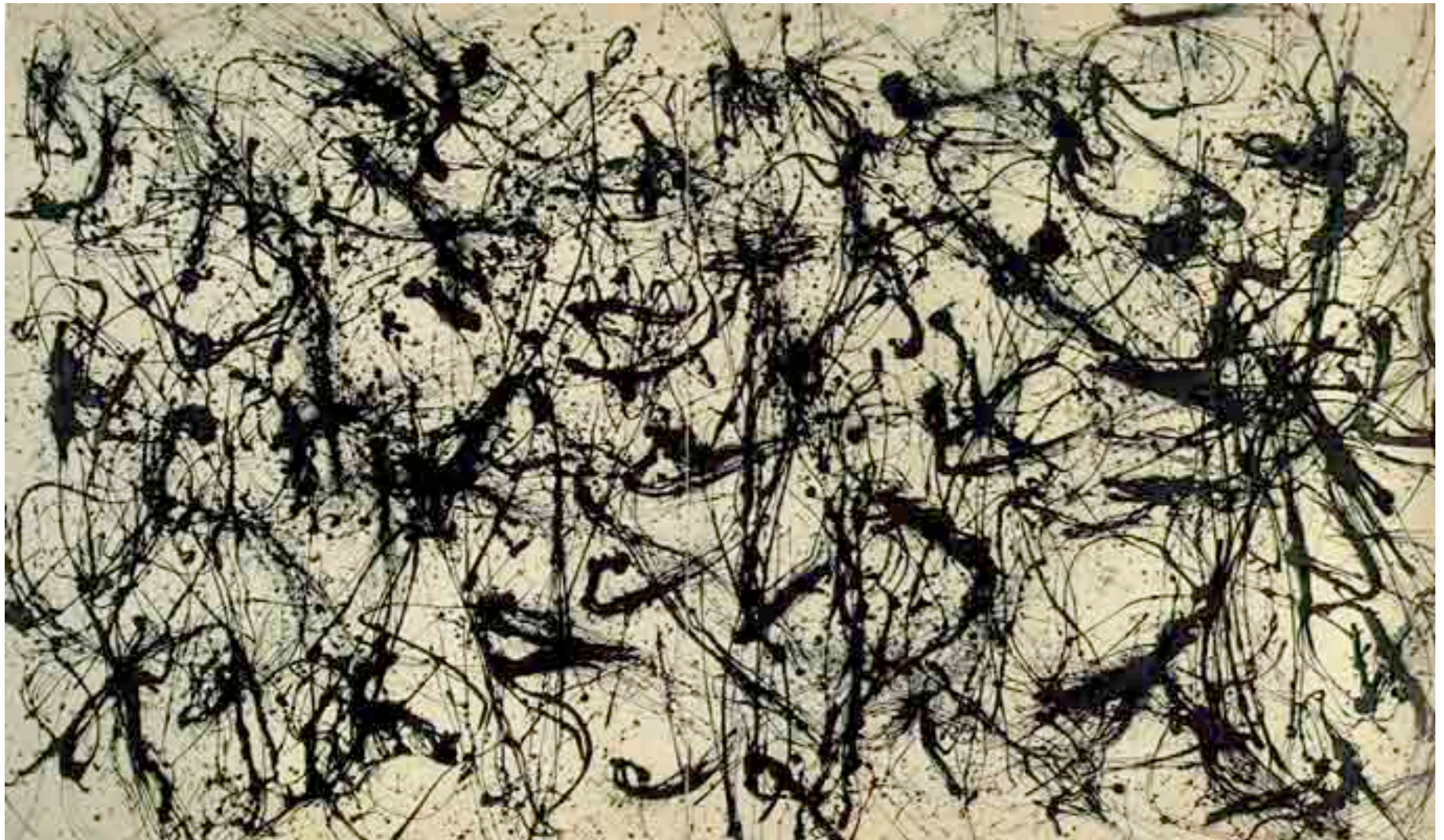
Pollock/Calame

This assignment combines the artistic approaches of two prominent artists:

Jackson Pollock (1912 – 1956) is famous as being one the foremost *abstract expressionist* painters. This type of painting was focussed upon the idea that the artist could present their Individual nature through the spontaneous action of applying paint to canvas.









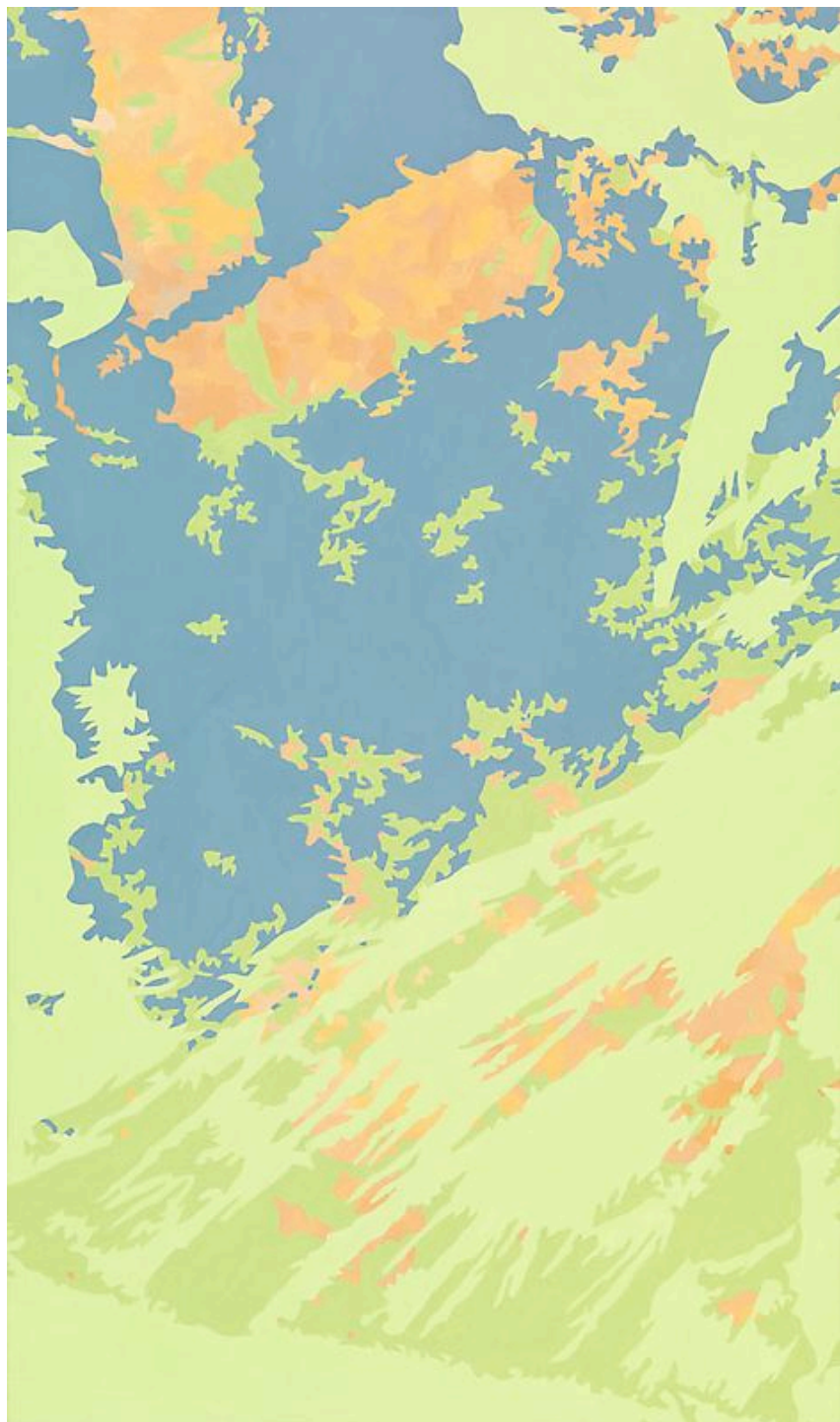
Ingrid Calame (1965 -)

Is a contemporary American artist who has developed a unique approach to their art.

Her method consists of finding interesting designs from the urban environment, tracing them on tracing paper.

She then places layer upon layer of these tracings to create a new – overall design. After arriving with a new design on a transparency, she chooses colours that look attractive and draws into the shaped areas with pencil crayon.









Like Jackson Pollock we will be making quick spontaneous marks with paint. Like Ingrid Calame we will be tracing marks which we will accumulate, layer and trace out to create a new design and then go into with coloured pencils.

